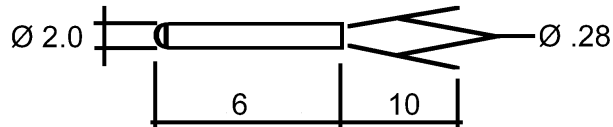




# SDI Technical Data

## PT100/6D



All measurements in millimeters

Point of Calibration: 5 mm from body

### SPECIFICATIONS:

NOMINAL RESISTANCE 100 OHMS @ 0° C

TOLERANCE BANDS    +/- .10% @ 0° C, BAND 1  
                              +/- .05% @ 0° C, BAND 2  
                              +/- .03% @ 0° C, BAND 3  
                              +/- .02% @ 0° C, BAND 4  
                              +/- .01% @ 0° C, BAND 5

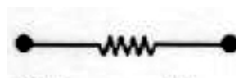
TEMPERATURE COEFFICIENT:  $0.00385 \Omega \cdot \Omega^{-1} \cdot ^\circ\text{C}^{-1}$

$\alpha$ , Delta, Beta, A, B, C

TEMPERATURE RANGE: -200 TO +661 °C

RESPONSE TIME in SECONDS:

| Water<br>V=1m/s |       | Air<br>V=1m/s |      |
|-----------------|-------|---------------|------|
| 50%             | 90%   | 50%           | 90%  |
| 0.210           | 0.400 | 9.0           | 28.0 |



100     $\Omega$

## Sensing Devices Inc.

1809 Homestead Lane, Lancaster PA 17601-5837  
 Phone: (717) 295-2311 Fax: (717) 295-2314  
 E:mail: info@sensingdevices.com